

Automated Optical Inspection Machine

# RV-1

Equipped with "Clear Vision Capturing System"

- Designed for high-speed and high-precision inspection.
- Captures super clear images using a large sized ring light and coaxial light.
- Enables easy programming by using a newly developed drag and drop algorithm selection tool.

2D/3D Unified Platform for:

- Solder Paste Inspection
- Pre/Post Automated Optical Inspection
- Conformal Coating Inspection

High-speed inspection  
0.14 sec./frame



## Clear Vision Capturing System

### Best-in-class performance

The RV-1 has enhanced lighting, a modified angle of the lowest tier light, coaxial light and 4 mega pixel CMOS camera capturing super clear images at high-speed and enhances operating efficiency. The combination of these features drastically reduces false calls and saves man-power.

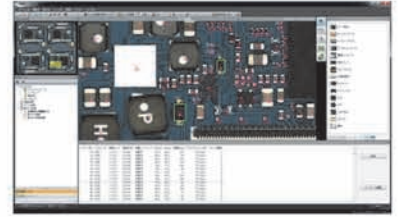
### Inspection speed = 0.14 sec./frame

High frame-rate camera, twin linear motor and high-speed image processing enables a high-speed inspection of 0.14 sec./frame.



## Easy Programming

By using a golden library, operators can reduce the time spent on preparing inspection programs. Drag and drop pre-defined algorithms can be used enabling easy programming.



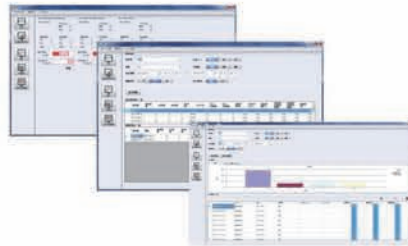
## CCC (Central Confirmation Control)\*

NG images obtained from multiple inspection machines are gathered into a central PC, enabling a single operator to visually judge all the images. This prevents inconsistent judgements made by several operators.



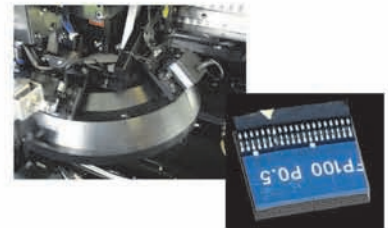
## SPC (Statistical Process Control)\*

Enhances SMT quality by compiling statistics on the inspection results.



## Supports 3D Inspection\*

Laser unit, angle cameras and "i-3D" are available for accurate 3D inspection.



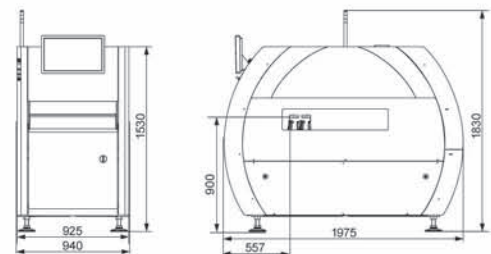
## Specifications

2D/3D Automated Optical Inspection Machine	
Model name	RV-1
PWB size	50mm × 50mm - 510mm × 300mm (Dual lane)/ 50mm × 50mm - 510mm × 590mm (Single lane)
Components	0402*, 0603(metric), cylindrical chip, tantalum capacitor, transistor, SOP/QFP, etc.
Inspection speed	0.14 sec./frame (typically 5 square inches/sec.)
Resolution	15μm (Standard resolution), 10μm (High resolution*)
Inspection items	Omission, offset, polarity, reversed, no-solder, bridge, amount of solder, foreign material, etc.
Power supply	AC 3-ph 200-230V 2.0kVA / 0.49MPa 10NI/min
Dimensions	W940mm × D1,975mm × H1,530mm
Weight	1,350kg

\*Option ※ Above figures are subject to vary on the conditions. Please contact our sales reps for details.

## External Dimensions

Unit: mm



# JUKI®

MANUFACTURER: JUKI CORPORATION  
 INQUIRY: JUKI AUTOMATION SYSTEMS CORPORATION  
 2-11-1, Tsurumaki, Tama-shi, Tokyo 206-8551, JAPAN  
 TEL.81-42-357-2293 FAX.81-42-357-2285

<http://www.juki.co.jp>



### JUKI CORPORATION HEAD OFFICE

An environmental management system to promote and conduct the following:  
 (1) Eco-friendly development of products and technologies  
 (2) Green procurement and green purchasing  
 (3) Energy conservation (reduction in carbon-dioxide emissions)  
 (4) Resource saving (reduction of papers purchased, etc.)  
 (5) Reduction and recycling of waste  
 in the activities of research, development, design, sales, distribution, and maintenance services of industrial sewing machines and industrial robots, etc., including sales and maintenance services of data entry systems.

### North America Headquarters:

Juki Automation Systems  
 507 Airport Blvd.  
 Morrisville, NC 27560  
 Phone: 919-460-0111  
 Email: [sales@jas-smt.com](mailto:sales@jas-smt.com)  
[www.jukiamericas.com](http://www.jukiamericas.com)

### North America Sales Office:

Juki Automation Systems  
 47102 Mission Falls Court  
 Suite 101  
 Fremont, CA 94539  
 Phone: 510-249-6700