

Flexible compact mounter

JX-200

JUKI®



3E EVOLUTION



Flexible compact mounter JX-200

Simple and compact, this complete mounter provides excellent versatility and is capable of high-speed, high precision placement

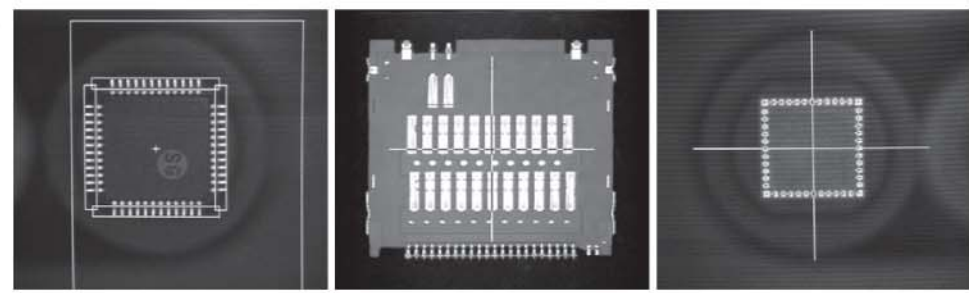
Highest-in-class productivity

13,900CPH
(IPC9850)

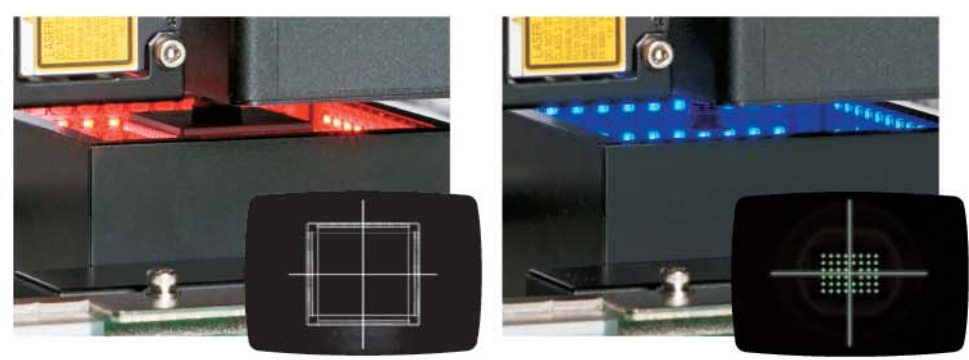
high-speed and high precision placement technology

Vision centering technology

Standard equipped with vision centering by the multi-nozzle laser head, "MNVC (Multi Nozzle Vision Centering)", the system is capable of high-speed placement of small, fine-pitch IC and odd-shaped components.



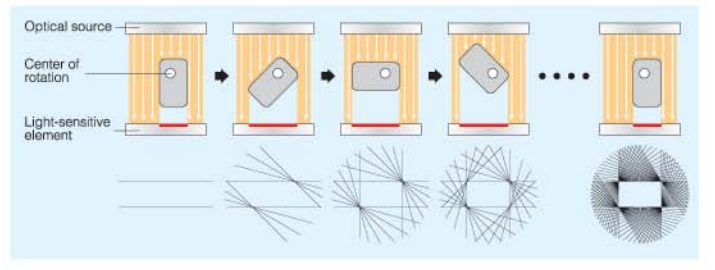
Centering method can be selected based on component type, shape, size and material. Laser centering is used for high speed placement of smaller components. Vision is used when lead or ball inspection is needed or when the component is too large for the laser. Many nozzles are available for odd-shaped components providing unsurpassed component handling.



Laser centering technology

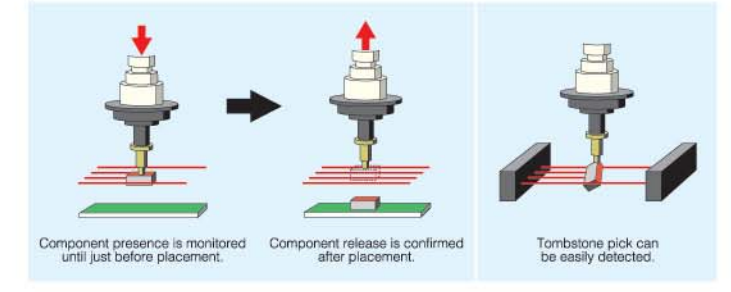
Component centering using laser

Components are rotated 360 degrees in the laser. The entire outline of the component is measured accurately by a high resolution CCD sensor. The exact component position and angle are obtained in a fraction of a second without a side trip to a camera.



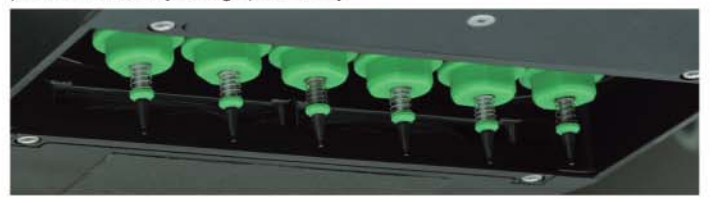
Component check function using laser

The component is monitored by the laser the entire time from the pick to the placement. This prevents missing placements and also checks for tombstone picks.



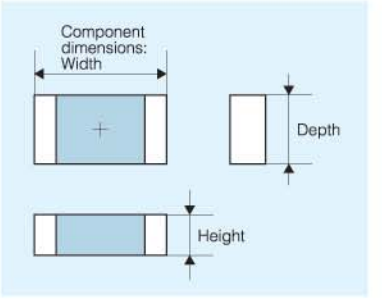
High-speed on-the-fly Simultaneous Centering using the 6-nozzle Multi-laser Head

Laser centering unit installed on the head allows direct travel from pick position to placement position while centering the components. Up to 6 components can be pick simultaneously for high productivity.



Simplified Data Entry

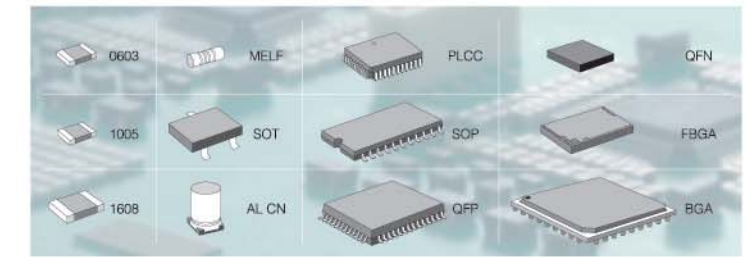
Component data can be completed by entering simple data such as dimensions. The exact dimensions can be measured automatically by the laser sensor, enabling quick and easy preparation of component data.



Superior Versatility

Superior flexibility (0603mm (0201inch) ~ 33.5mm)

The JX-200 has a wide component range, placing parts from 0603mm(0201inch) to 33.5mm.



Automatic Tool Changer (ATC)

Nozzles can be automatically changed during manufacturing according to the type of components. (standard equipment)



High Quality Placement Technology

No-blow placement technology

JUKI's original vacuum self-calibration function eliminates the need for a vacuum "blow-off" during placement, which can disturb neighboring components or solder paste.



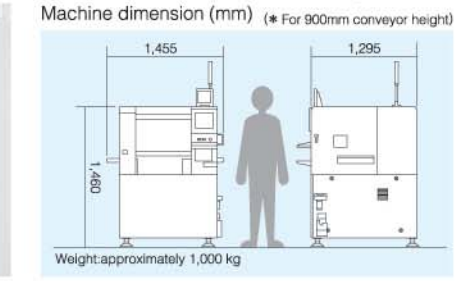
Easy and Compact

Fully Graphical Touch Panel

The user interface is highly graphical, reducing the need for language specific text. A touch screen is standard for easy operation by operators with little computer experience. This touch screen can tilt to adjust the best position for the operator.



Excellent area productivity



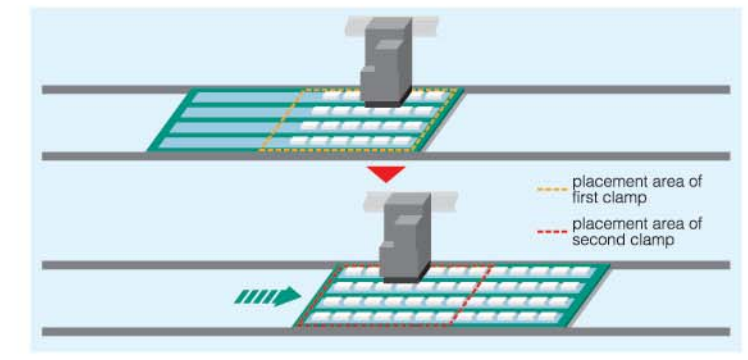
Power-saving design

Power consumption is about half that of a typical placement machine, saving on operational costs. (Apparent power = 1.6 kVA)

Longer sized PWB in X axis (up to 800 mm x 250 mm) (option)

Indexing a Board Twice

Capable of placing longer boards up to 800mm (31.5") by automatically indexing the board twice. Ideally suited for production of boards for LED lighting.



Nozzles for LED components

JUKI has a variety of nozzles for placing LED components. Contact our sales personnel for details.



Specification

Item		Model	Flexible compact mounter JX-200
Board sizes			Min. 50 x 50 ~ Max. 410mm x 250mm or 410mm x 360mm*1
Component height	12mm		Standard Setting
	20mm		Optional Setting
Component size	Laser recognition		0201 (0603 metric)*3 ~ 33.5mm
	Vision recognition	Standard camera	3mm ~ 33.5mm
		High-resolution camera (option)	1.0 x 0.5mm ~ 24.0mm
Placement speed	Chip	IPC9850	13,900CPH
	IC		4,400CPH
Placement accuracy	Laser recognition		±0.05mm (±3σ)
	Vision recognition		±0.04mm
Feeder inputs			Max.60 on 8mmT/F
Power supply			200 to 415 VAC,3-phase
Apparent power			1.6kVA
Operating air pressure			0.5±0.05Mpa
Air consumption			345L/min (Opt: Vacuum Pump 50L/min)
Machine dimensions (W x D x H) *2			1,455 x 1,295 x 1,460mm
Mass (approximately)			1,000kg

*1 : Maximum board width of 800mm when using longer PWB option.

*2 : Dimensions of machine described are for Conveyor height 900mm.

*3 : HMS is required when a 0603 component is placed. (option)

Options

Recognition system	High-resolution camera / Height Measurement System(HMS) / Lighting unit for solder recognition
Operation system	Handheld Operating Device (HOD)
Conveyor	Conveyor extension guide / Longer sized PWB (800mm)
Safety device	Circuit breaker
Other	Caster / Main line filter / Three-color signal light / Vacuum pump
Software	External Programming Unit (EPU)
Component handling and feeders	Tape feeder 8~72mm / Bulk feeder / Stick feeder / Tray holder* / Trash box / Feeder stocker

* : Please refer to product specifications for details.

JUKI®

JUKI CORPORATION

Electronic Assembly & Test Systems Division

2-11-1, Tsurumaki, Tama-shi, Tokyo 206-8551, JAPAN
TEL.81-42-357-2293 FAX.81-42-357-2285



JUKI CORPORATION HEAD OFFICE

Juki Corporation operates an environmental management system to promote and conduct the following as the company engages in the research, development, design, sales, distribution, and maintenance services of industrial sewing machines and industrial robots, etc. and the research, development and design of household sewing machines, and in the provision of sales and maintenance services for data entry systems:

- (1) The development of products and engineering processes, which are safe to the environment
- (2) Green procurement and green purchasing
- (3) Energy conservation (reduction in carbon-dioxide emissions)
- (4) Resource saving (reduction of papers purchased, etc.)
- (5) Reduction and recycling of waste
- (6) Improvement of logistics efficiency (modal shift and improvement of packaging, packing, etc.)

North America Headquarters:

Juki Automation Systems
507 Airport Blvd.
Morrisville, NC 27560
Tel. 919-460-0111
Email: sales@jas-smt.com
www.jukiamericas.com

North America Sales Office:

Juki Automation Systems
47102 Mission Falls Court
Suite 101
Fremont, CA 94539
Phone: 510-249-6700

■JUKI Specifications and appearance may be changed without notice.

<http://www.juki.co.jp>

Aug-2011/0000/Rev.00